

## AGRICULTURE

### **Q: How much does the Agriculture Specialty plate cost?**

**A:** The fee is \$20.00 in addition to the regular registration fee when first purchasing the plates. Each renewal is an additional \$15.00. The plates will be issued in a unique numbering sequence, beginning with 101-AGA for the passenger sequence, 101-AGC for the commercial sequence, and 101-AGF for the farm sequence. **\*\*Vanity available\*\***

### **Q: Where does the money go?**

**A:** The **Maine Agriculture Education Fund** receives \$10.00 from each purchase and renewal fee. The **Agricultural Plate** will generate funds to be used for Agricultural education in Maine. Training and materials for teachers, grants for agricultural programs in school and field trips are some programs these funds will support.



---

## ANIMAL WELFARE

### **Q: How much does the Support Animal Welfare specialty plate cost?**

**A:** The fee is \$20.00 in addition to the regular registration fee when first purchasing the plates. Each renewal is an additional \$15.00. There will be no reservation period and no low digit plates will be available for issuance. The plates will be issued in a unique numbering sequence, beginning with 101-AMA through 999-AMZ. **\*\*Vanity available\*\***

### **Q: Where does the money go?**

**A:** The proceeds from the Support Animal Welfare specialty plate will be equally distributed between the Animal Welfare Auxiliary Fund and the Companion Animal Sterilization Fund.



## **BARBARA BUSH CHILDREN'S HOSPITAL**

**Q: How much does the Barbara Bush Children's Hospital specialty plate cost?**

A: The fee is \$20.00 in addition to the regular registration fee when first purchasing the plates. Each renewal is an additional \$15.00. There will be no reservation period and low digit plates will not be available for issuance. The plates will be issued in a unique numbering sequence, beginning with 101-BBA through 999-BBZ. \*\*Vanity available\*\*

**Q: Where does the money go?**

A: The proceeds from The Barbara Bush Children's Hospital specialty plate will be credited to The Barbara Bush Children's Hospital to support ongoing pediatric programs.



---

## **CONSERVATION**

**Q: How much does the Conservation plate cost?**

A: The fee is \$20.00 in addition to the regular registration fee when first purchasing the plates. Each renewal is an additional \$15.00. \*\*Vanity available\*\*

**Q: Where does the money go?**

A: The [Maine Environment Trust Fund](#) receives \$14 from each set of plates purchased or renewed and this amount is tax deductible. The money supports [state parks](#) and the Endangered and Nongame Wildlife Fund.



## **BREAST CANCER SUPPORT**

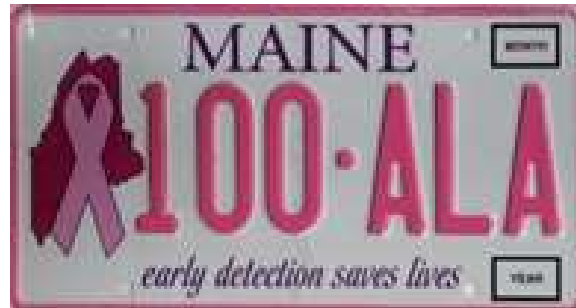
### **Q: How much does the Breast Cancer plate cost?**

A: The fee is \$20.00 in addition to the regular registration fee when first purchasing the plates. Each renewal is an additional \$15.00. The plates will be issued in a unique numbering sequence, beginning with 101-ALA. There will be no low digit plates available. **\*\*Vanity available\*\***

### **Q: Where does the money go?**

A. The proceeds from the Breast Cancer Support Services specialty plate raises money to be deposited into the Breast Cancer Services Special Program Fund, established by the Maine Center for Disease Control and Prevention. The Maine Center for Disease Control and Prevention will then equally distribute the funds to three different organizations:

1. The breast and cervical health program within the CDC, <https://www.maine.gov/dhhs/mecdc/population-health/bcp/>. This health program provides services to underserved people with breast health and breast cancer needs and provide funding for cancer research, education, and patient support programs.
2. The Maine Cancer Foundation, <http://mainecancer.org/>, an independent Maine based organization dedicated to reducing cancer incidence and mortality rates in Maine.
3. Maine Breast Cancer Coalition's Support Service Fund, <https://www.mainebreastcancer.org/support/support.cfm>, dedicated to providing financial support for underserved people with breast health or breast cancer needs in Maine.



## LIGHTHOUSE TRUST

**Q: How much does the Maine Lighthouse Trust specialty plate cost?**

A: The fee is \$20.00 in addition to the regular registration fee when first purchasing the plates. Each renewal is an additional \$15.00. There will be no reservation period and low digit plates will not be available for issuance. The plates will be issued in a unique numbering sequence, beginning with 101-BEA through 999-BEZ (skip letters I and O). **\*\*Vanity available\*\***

**Q: Where does the money go?**

A: The proceeds from Maine Lighthouse Trust specialty plate will be credited to the Maine Lighthouse Trust to support lighthouse restoration and preservation efforts.



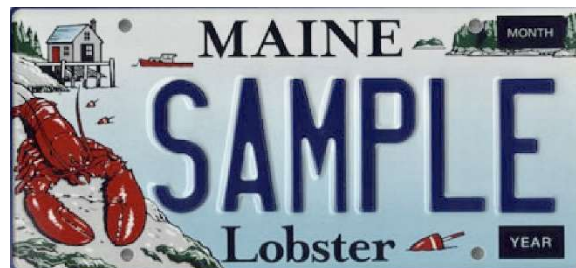
## LOBSTER

**Q: How much does the Lobster Specialty plate cost?**

A: The fee is \$20.00 in addition to the regular registration fee when first purchasing the plates. Each renewal is an additional \$15.00. The plates will be issued in a unique numbering sequence, beginning with 101-AAA. There will be no low digit plates available. **\*\*Vanity available\*\***

**Q: Where does the money go?**

A: The [Lobster Research, Education and Development Board](#) receives \$10.00 from each Lobster Specialty plate purchased or renewed and this amount is tax deductible.



### MAINE BLACK BEARS

**Q: How much does the Black Bear plate cost?**

A: The fee is \$20.00 in addition to the regular registration fee when first purchasing the plates. Each renewal is an additional \$15.00. The plates will be issued in a unique numbering sequence, beginning with 101-ACA. There will be no low digit plates available. **\*\*Vanity available\*\***

**Q: Where does the money go?**

A: The [Maine Black Bears Scholarship Fund](#) receives \$10 from each Black Bear plate purchased or renewed and this amount is tax deductible.



---

### UNIVERSITY OF MAINE

**Q: How much does the University of Maine System plate cost?**

A: The fee is \$20.00 in addition to the regular registration fee when first purchasing the plates. Each renewal is an additional \$15.00. **\*\*Vanity available\*\***

**Q: Where does the money go?**

A: The [University of Maine System Scholarship Fund](#) receives \$14.00 from each University of Maine System plate purchased or renewed and this amount is tax deductible.



### STANDARD (CHICKADEE) **\*\*Vanity available\*\***



### **SPORTSMAN (SUPPORT WILDLIFE)**

**Q: How much does the Sportsman Specialty plate cost?**

A: The specialty plate fee is \$20.00 in addition to the regular registration fee for both first-time issuance and at time of each renewal. The plates have a unique numbering sequence, beginning with 101-AKA. **\*\*Vanity available\*\***

**Q: Where does the money go?**

A: The Sportsman Plate funds will be distributed to the Fish Hatchery Maintenance Fund; the Boat Launch Facilities Fund; the Maine Endangered and Nongame Wildlife Fund; and the Support Landowners Program.



---

### **SUPPORT THE TROOPS**

**Q: How much does the Support Your Troops Specialty plate cost?**

A: The fee is \$20.00 in addition to the regular registration fee when first purchasing the plates. Each renewal is an additional \$15.00. There will be no reservation period and no low digit plates will be available for issuance. The plates will be issued in a unique numbering sequence, beginning with 101-AJA through 999-AJZ (skipping the AJI and AJO series). **\*\*Vanity available\*\***

**Q: Where does the money go?**

A: The proceeds from the Support Your Troops specialty plate provide financial assistance to the members of the Maine National Guard, residents of the State who are members of the Reserves, the families of those members, or will be used for other emergencies and special needs as determined by the Support Your Troops Advisory Board.

